

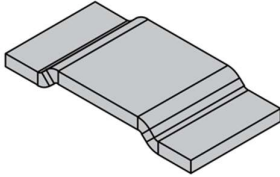


SBJ -1206 Series

Zero Ohm Tin Plated Jumper

Features

- Constant Current up to 5 amps
- High Conductivity Copper
- High Application Temperature Range -55°C to +170°C
- Max. Solder Temperature up to 350°C / 30Sec
- Flame Resistant
- Solid Metal Construction
- RoHS and REACH Compliant

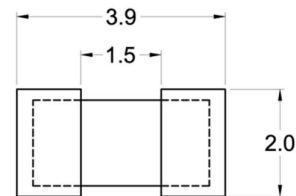
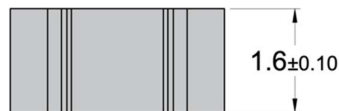
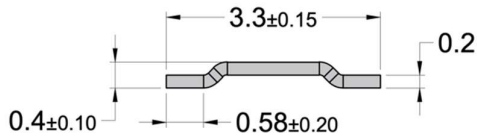


Applications

- Automotive Applications



Technical Data		
Resistance Value	0	(mΩ)
Applicable Temperature Range	-55 to +170	°C
Load Capacity	5	A



Solder Pad Layout

Note:

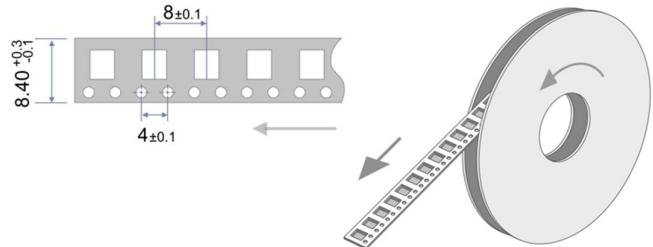
- 1) Recommended Solder Reflow Profile:
<http://www.shivalikbimetals.com/SRP-01.pdf>
- 2) SBJ-1206 supply without laser marking



SBJ -1206 Series

Zero Ohm Tin Plated Jumper

Reel Information	
Reference Standard	DIN EN 60286-3
Width of Reel	8.40 mm
Number of parts per Reel	5000 pcs



Example of Ordering Code

